

sectyelectronics®
Earthquake warning, - and Managementsystem

secty lifePatron®

**Project – Switzerland – Basel
ROCHE KAISERAUST**



Quelle. ROCHE

Who is ROCHE?

Basel has been the headquarters of the Roche Group since it was founded in 1896.

10,700 employees from over 100 countries come together in Basel / Kaiseraugst to help shape the future of healthcare and create real added value for patients worldwide.

It is being researched in the fields of neuroscience, ophthalmology, rare diseases and infectiology, but also oncology and inflammatory diseases.

Here you will find local and global functions in addition to the Executive Committee. The global headquarters of the Pharma and Diagnostics divisions are in Basel. By 2023, a new research and development center will be created for the research and development of novel medical solutions. Kaiseraugst is one of the most important production and packaging locations. Since 2017, there is one of the largest IT innovation centers worldwide.



Quelle. ROCHE

ROCHE increase the seismic safety of the natural gas network

In the event of a strong earthquake, the supply of natural gas from the supply network will be closed automatically in the future. Thus consequential damage is reduced by uncontrolled escaping natural gas.

The earthquake alert system "secty lifePatron®" for shut off the gas supply has been successfully put into operation. A stronger quake with a localized high intensity will close two safety shut-off valves.

Project description:

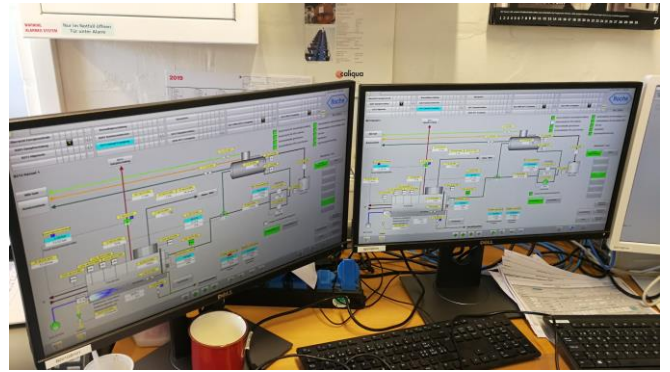
To ensure that the entire gas supply actually only closes in the event of a strong earthquake, a redundancy of three earthquake signals "MASTER" was provided.

The alarm signals are sent to a control center. There, the software decides on the shutdown of gas valves and the alarm. Only when two masters of three send an alarm, the gas valves are automatically closed. If severe damage occurs to the pipes, gas will no longer escape, reducing consequential damage from fires.

Explosively protected room with two gas valves:



Control room/ Monitoring:



The messages from the 3 master devices are displayed in the control panel

Alarm:

When closing the gas valves, the authorized persons are alerted in the event of an earthquake alarm via an internal warning system.

Earthquake detector MASTER:



Service:

The earthquake alarm system is serviced and tested once a year.

sectyelectronics GmbH

Heine Str. 34
44 581 Castrop-Rauxel

Phone: 0049 - (0) 23 05 - 977 96 32

e-mail: info@secty-electronics.com

www.secty-electronics.com